



# USER GUIDE

**Firmware Version: 1.0.x**  
Last updated on Apr 29, 2026

# 605 EVO

MOTORCYCLE MESH COMMUNICATION SYSTEM



The firmware version 1.0.x indicates that this manual is applicable to all firmware updates within the version 1.0 series.

# QUICK REFERENCE

**P** : Phone button    **J** : Jog dial    **M** : Mesh Intercom button    **F** : Flashlight button

Type	Operation	Button	Duration
<b>Basic Operations</b>	Power on	<b>P</b> & <b>J</b>	Press for 1 second
	Power off	<b>P</b> & <b>J</b>	Single tap
	Volume up/down	<b>J</b>	Rotate
<b>Flashlight</b>	Flashlight on/off	<b>F</b>	Single tap
<b>Phone</b>	Phone pairing	<b>P</b>	Press for 5 seconds
	Answer phone call	<b>P</b> or <b>J</b>	Single tap
	End phone call	<b>P</b>	Single tap
		<b>J</b>	Press for 2 seconds
	Reject phone call	<b>J</b>	Press for 2 seconds
	Speed dial	<b>P</b>	Double tap
	Play/Pause music	<b>J</b>	Press for 1 second
Track forward/back	<b>J</b>	Rotate while pressing	
<b>Siri or Google Assistant</b>		<b>P</b>	Single tap
<b>Mesh Intercom™</b>	Mesh Intercom on/off	<b>M</b>	Single tap
	Mute/unmute mic	<b>M</b>	Press for 1 second
	Channel selection	<b>M</b>	Double tap
	Mesh grouping	<b>M</b>	Press for 5 seconds
	Mesh Reach-Out request	<b>M</b>	Triple tap
	Reset mesh	<b>M</b>	Press for 8 seconds
<b>Wave Intercom™</b>	Wave Intercom on	<b>M</b>	Double tap
	Wave Intercom off	<b>M</b>	Single tap
	Switch to Mesh Intercom	<b>J</b>	Single tap
<b>Configuration menu</b>		<b>J</b>	Press for 10 seconds
<b>Factory reset</b>		<b>P</b>	Press for 10 seconds
<b>To confirm</b>		<b>J</b>	Single tap
<b>To cancel</b>		<b>P</b>	Single tap
<b>Fault reset</b>		<b>P</b> & <b>J</b>	Press for 10 seconds

# BEFORE GETTING STARTED

## **I Sena Motorcycles App**

Download the Sena Motorcycles app from the Google Play Store or the App Store.



## **I WAVE Intercom App**

Download the WAVE Intercom app from the Google Play Store or the App Store.



For detailed information on the Wave Intercom, please refer to the Wave Intercom User Guide at [sena.com](http://sena.com).

# CLICK ANY SECTION TO BEGIN



ABOUT THE 60S EVO



INSTALLATION



BASIC OPERATION



FLASHLIGHT



RIDEGLOW LED



PAIRING WITH  
BLUETOOTH  
DEVICES



USING WITH A  
SMARTPHONE



MESH INTERCOM



**WAVE**  
INTERCOM

WAVE INTERCOM



BLUETOOTH  
INTERCOM



UNIVERSAL  
INTERCOM



INTERCOM GATEWAY



AUDIO  
MULTITASKING



FM RADIO



VOICE COMMAND



FIRMWARE UPDATE



TROUBLESHOOTING

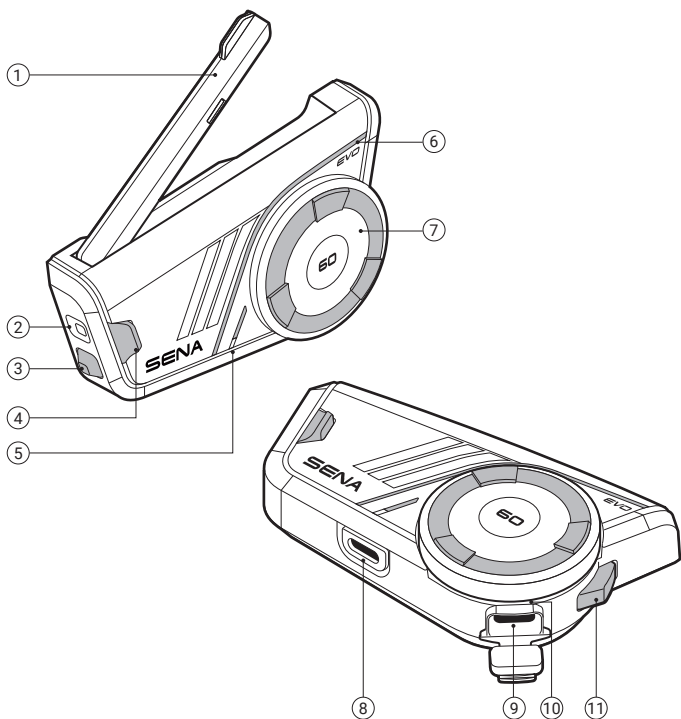


# 01 ABOUT THE 60S EVO

## Key Features

- Mesh Intercom 3.0 with improved sound quality, a more robust connection, and extended talk time
- Dual version Mesh: Mesh 2.0 for backward compatibility
- Wave Intercom compatible
- Dual-core CPU with parallel architecture - maximizes performance for simultaneous connections to multiple devices and enhances audio multitasking capabilities
- AI-based noise cancellation
- Enhanced voice command
- Premium audio by BOSE\*
- Two sets of helmet clamp kits include two sets of speakers and three sets of microphones
- Interchangeable faceplates
- Dynamic LED and integrated flashlight
- Magnetic mount
- IPx7 waterproof rating
- Bluetooth version 5.3
- Over-the-Air (OTA) firmware update
- Automatic power on/off

\* The SOUND BY BOSE experience is available on devices tuned with Bose technology, and cannot be achieved through speaker replacement alone.



- 
- ① Mesh Intercom antenna

---

  - ② Flashlight

---

  - ③ Flashlight button

---

  - ④ Mesh Intercom button

---

  - ⑤ Status LED

---

  - ⑥ Dynamic LED

---

  - ⑦ Jog dial

---

  - ⑧ Speakers & microphone connection

---

  - ⑨ USB-C charging port

---

  - ⑩ Charging LED

---

  - ⑪ Phone button

---

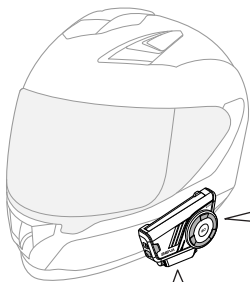
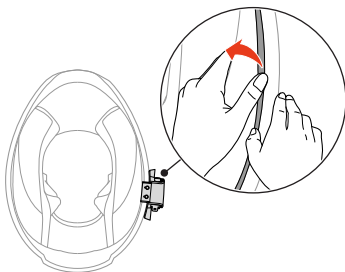
## Package Contents

 <p>60S EVO</p>	 <p>Interchangeable faceplates</p>	 <p>Helmet clamp</p>
 <p>Glued surface mounting plate</p>	 <p>Double sided adhesive tapes</p>	 <p>Speaker pads</p>
 <p>Velcro pads for speakers</p>	 <p>Wired-boom microphone</p>	 <p>Wired microphone</p>
 <p>Microphone sponges</p>	 <p>Velcro pad for wired-boom microphone</p>	 <p>Velcro pad for wired microphone</p>
 <p>Wired-boom microphone holder</p>	 <p>Velcro pad for wired-boom microphone holder</p>	 <p>Magnetic cover for helmet clamp</p>
 <p>3.5 mm audio adapter</p>	 <p>USB-C charging cable</p>	

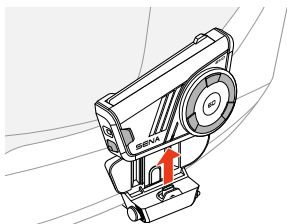
## 02 INSTALLATION

### Main Unit & Clamps

#### Helmet Clamp



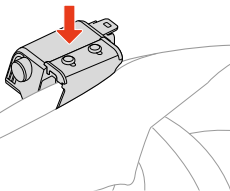
#### Removal



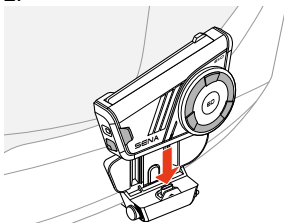
Simply push the main unit upward firmly.

#### Installation

1.

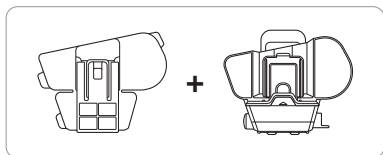


2.

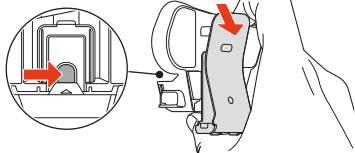


The main unit easily attaches using magnets.

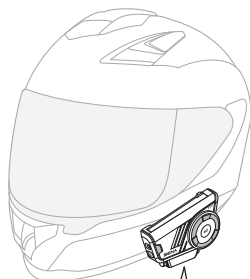
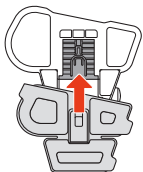
## Glued Surface Mounting Plate



1. Remove Clip



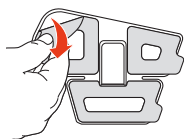
2. Insert Plate



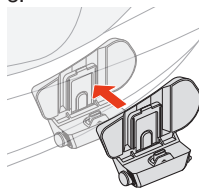
1.



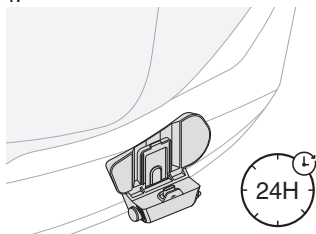
2.



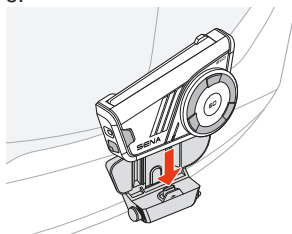
3.



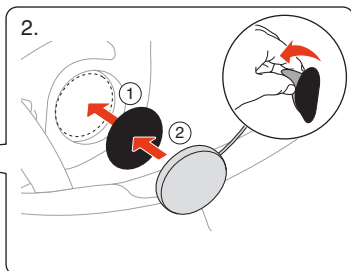
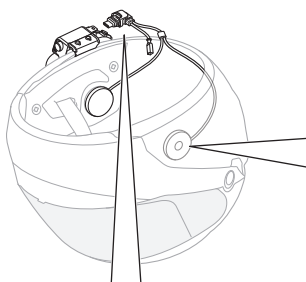
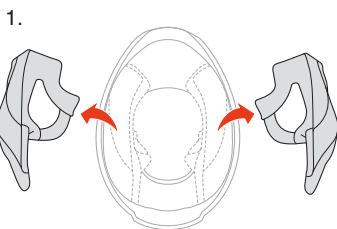
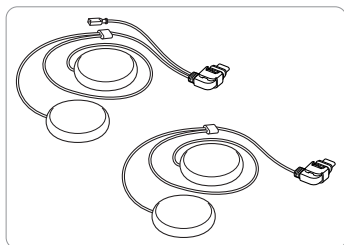
4.



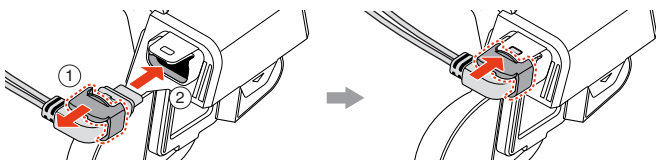
5.



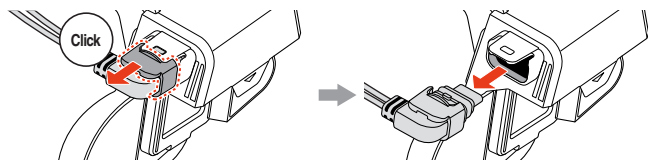
# Speakers

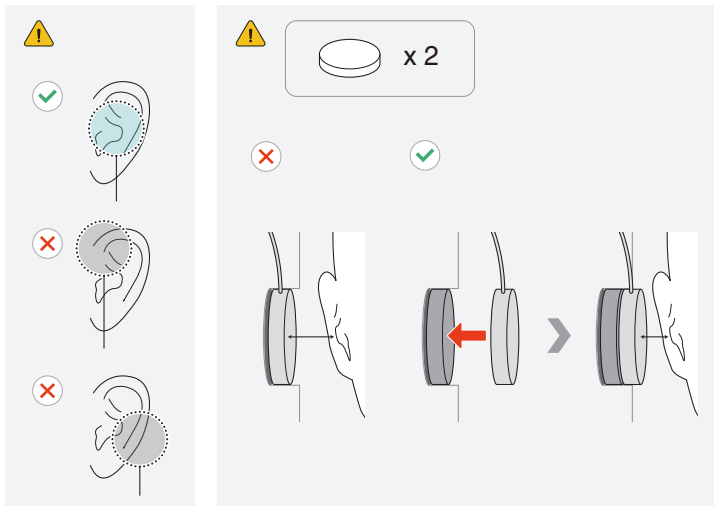


## Installation

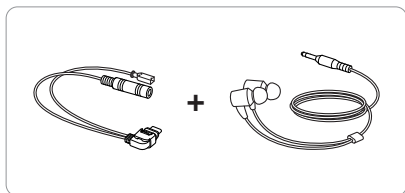


## Removal

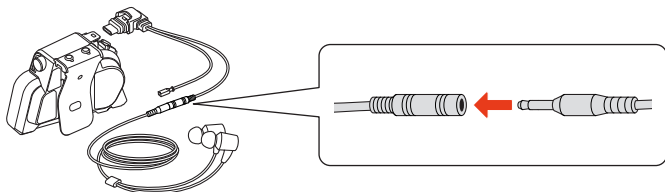




## 3.5 mm Audio Adapter

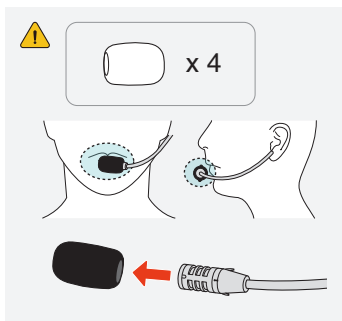
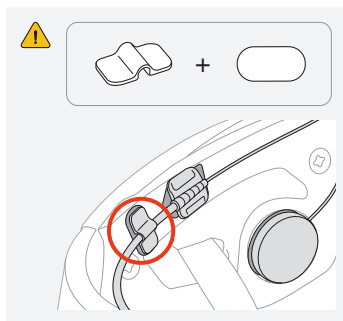
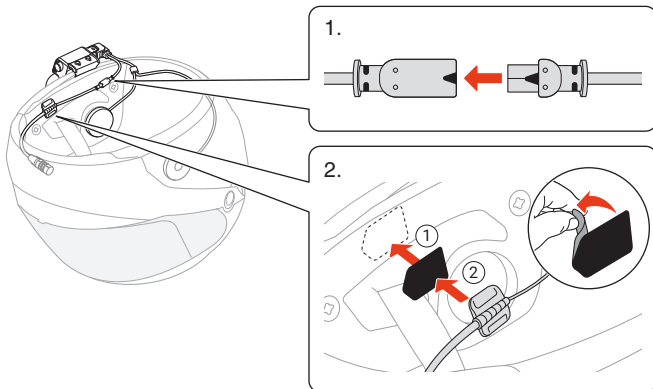
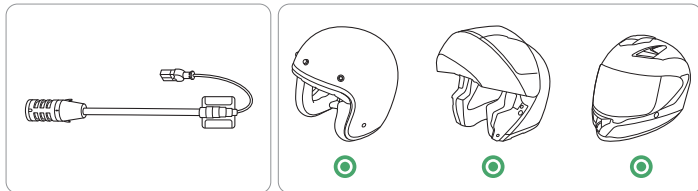


Earbuds with 3.5 mm audio connector  
(Not included)

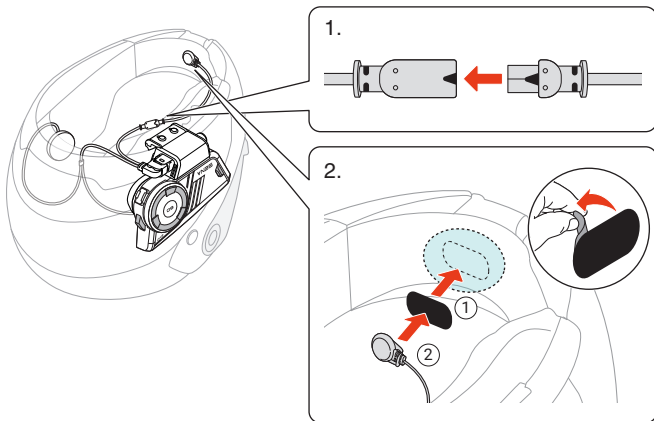
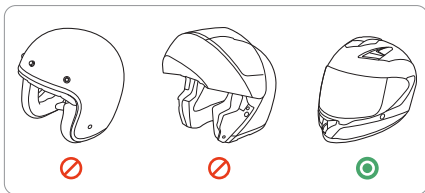
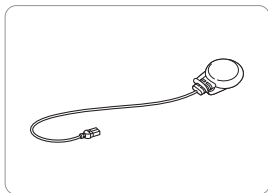


# Microphone

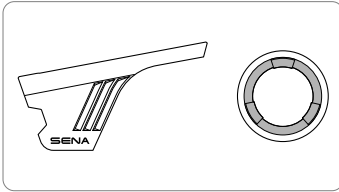
## Wired-Boom Microphone



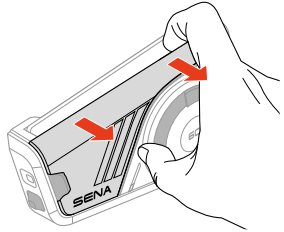
## Wired Microphone



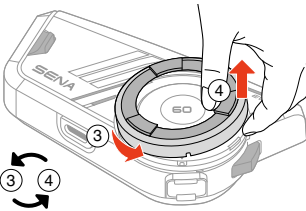
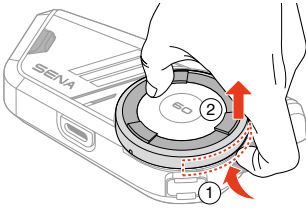
## Interchangeable Faceplates



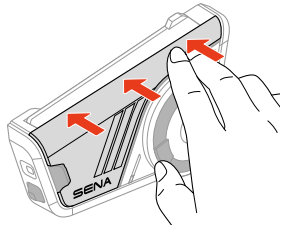
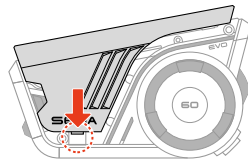
### Removal



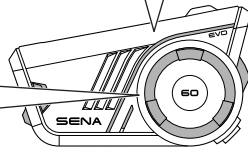
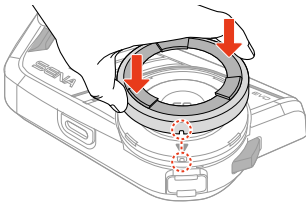
### Removal









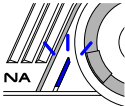
### Installation



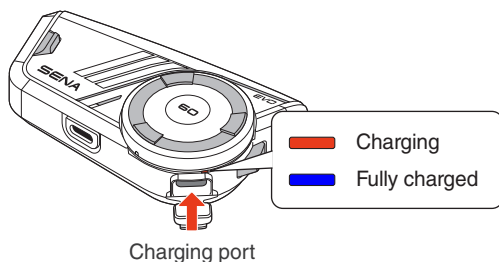
### Installation



## 03 BASIC OPERATION

	<p><b>Tap</b> Tap the button the specified number of times</p>
	<p><b>Press and Hold</b> Press and hold the button for the specified amount of time</p>
	<p><b>Rotate</b> Rotate the jog dial</p>
	<p><b>Rotate while Pressing</b> Rotate while pressing the jog dial</p>
	<p><b>Voice Prompt</b></p>
	<p><b>Voice Command</b></p>
	<p><b>LED</b></p>

## Charging

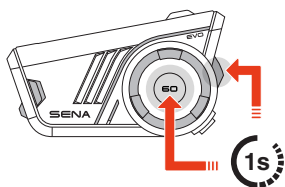


Charging port

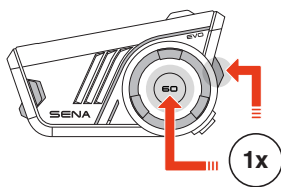
It takes 1.5 hours to fully charge.

- The 60S EVO features fast charging, delivering 4 hours of Mesh Intercom and 6.0 hours of Bluetooth intercom with just a 20-minute charge.
- Any third-party USB charger can be used, as long as it is approved by the FCC, CE, IC, or other locally recognized regulatory agencies.
- Using a non-approved charger may cause fire, explosion, leakage, and other hazards, potentially reducing the battery's lifespan or performance.

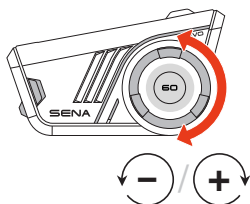
## Power On



## Power Off

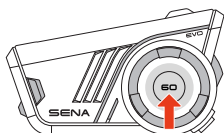


## Volume



## Configuration

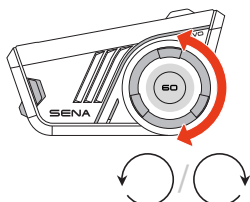
### Enter Configuration



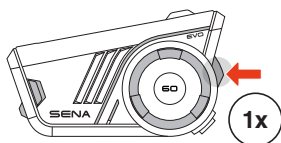
🔊 "Configuration menu"



### Navigate



### Confirm

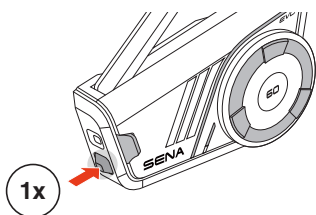


## 04 FLASHLIGHT



In some regions, local laws and regulations restrict the use of LEDs on helmets. Therefore, ensure you are familiar with and comply with the relevant laws and regulations in the area where you use the helmet.

### Flashlight On/Off



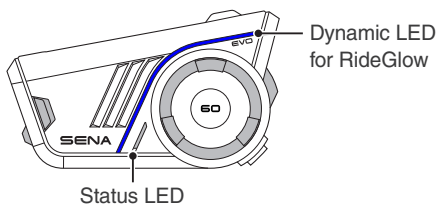
 **On:** "Flashlight On"

 **Off:** "Flashlight Off"

- The flashlight will automatically turn off approximately 10 minutes after being turned on.

## 05 RIDEGLOW LED

The RideGlow feature uses the dynamic LED to indicate the device's current status or display glowing effects while riding. You can customize the color and pattern of the glowing effect through the Sena Motorcycles app.

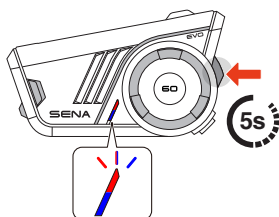


## 06 PAIRING WITH BLUETOOTH DEVICES

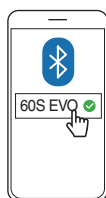
When using the 60S EVO with other Bluetooth devices for the first time, they need to be paired. The 60S EVO can pair with multiple devices, including two mobile phones and one GPS. However, it supports only one additional device, alongside a mobile phone, for simultaneous connection.

### Phone Pairing

1.



2.

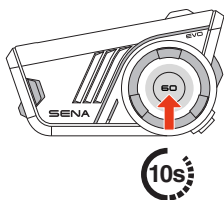


🔊 "Phone pairing"

- When you turn on the 60S EVO for the first time or reboot it after a factory reset, the 60S EVO will automatically enter phone pairing mode.
- To cancel phone pairing, press any button.

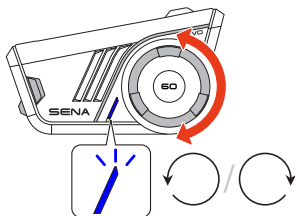
## Second Mobile Phone Pairing

1.



"Configuration menu"

2.



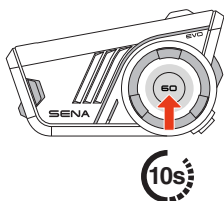
"Second mobile phone pairing"

3.



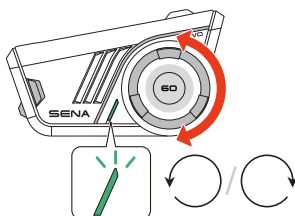
## GPS Pairing

1.



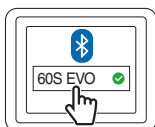
"Configuration menu"

2.



"GPS pairing"

3.



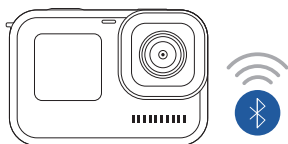
## Action Camera Pairing

Pairing the 60S EVO with an action camera allows you to record audio from the Mesh Intercom and Bluetooth Intercom conversations. You can also use the action camera's voice commands via the headset's microphone.

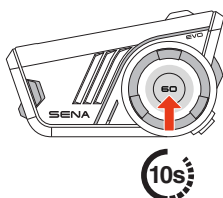
- For detailed instructions on voice commands, refer to the user guide for your action camera.

### Device Pairing

1. Put your action camera in Bluetooth pairing mode.

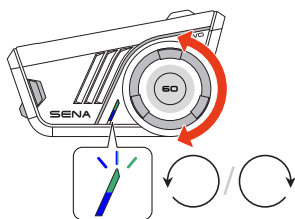


- 2.



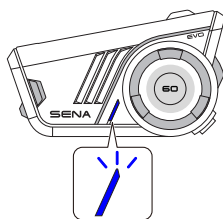
"Configuration menu"

- 3.



"Action cam pairing"

4. Wait until you hear a voice prompt.

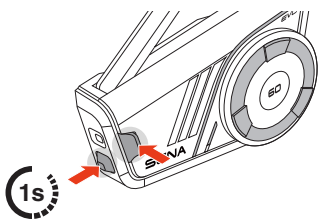


"Device Connected"

- When paired with an action camera, music and FM radio are disabled.

With **Insta360's X5**, you can operate the following functions using the buttons on the 60S EVO. This button control is not supported by other action cameras.

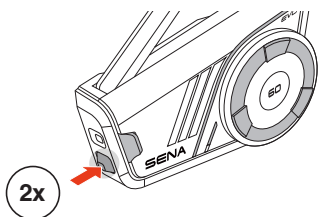
## Camera On/Off



**On:** "Camera on"

**Off:** "Camera off"

## Shooting Start/End



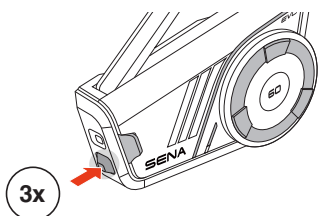
### Video

**Start:** "Recording"

**End:** "Recording stopped"

- In photo shooting modes, you will hear a shutter sound.
- You can continue video recording while on a phone call or using a voice assistant, but audio will not be recorded.

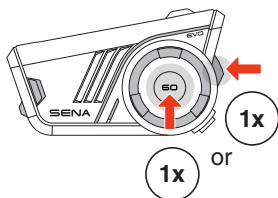
## Toggle Photo/Video



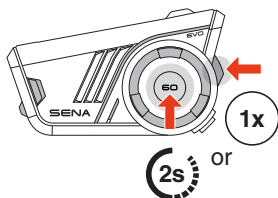
## 07 USING WITH A SMARTPHONE

### Making and Answering Calls

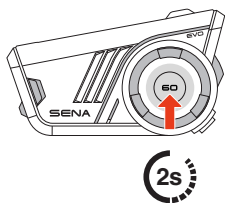
#### Answer a Call



#### End a Call



#### Reject a Call

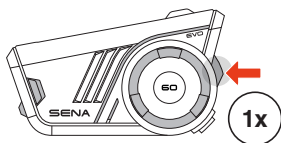


### Siri or Google Assistant

Say "Hey Siri", "Hey Google," or tap the phone button to activate Siri or Google Assistant.

 "Hey Google" or "Hey Siri"

or



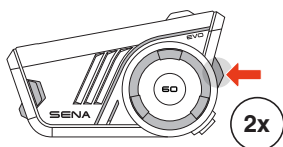
# Speed Dial

## Assign Speed Dial Presets

Speed dial presets can be assigned using the Sena Motorcycles app.

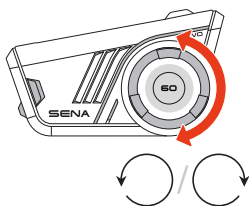
## Use Speed Dial Presets

1. Enter the speed dial menu.



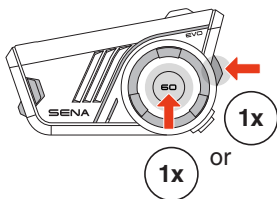
"Speed dial"

2. Navigate forward or backward through speed dial preset.



- ① Last number redial
- ② Speed dial (1→2→3)
- ③ Cancel

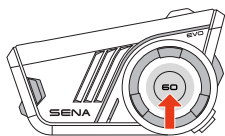
3. Tap the phone button or jog dial to confirm.



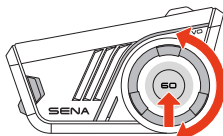
"Speed dial(#)"

## Music

### Play/Pause Music



### Track Forward/Backward

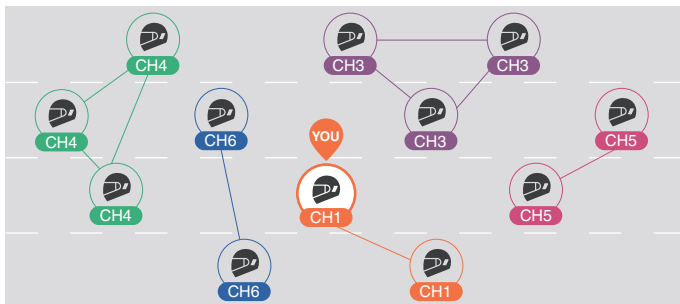


## 08 MESH INTERCOM

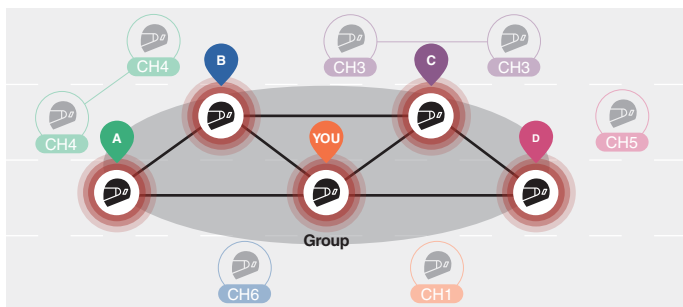
The 60S EVO provides two Mesh Intercom modes:

- Open Mesh™ for open group intercom conversations.
- Group Mesh™ for private group intercom conversations.

### Open Mesh



### Group Mesh



## Mesh Version Switch

### Switch to Mesh 2.0 for Backward Compatibility

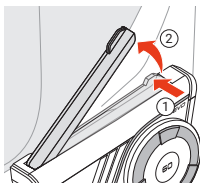
Mesh 3.0 is the latest Mesh Intercom technology, but to communicate with legacy products using Mesh 2.0, please switch to Mesh 2.0 using the Sena Motorcycles app.

## Open Mesh

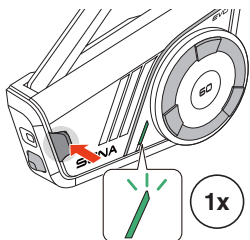
You can freely communicate with virtually unlimited users in each of the 6 available channels. The default Mesh Intercom channel is 1.

### Mesh Intercom Antenna

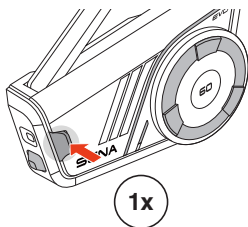
Unfold the antenna before using the Mesh Intercom.



### Mesh Intercom On/Off



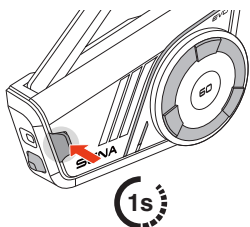
**On:** "Mesh intercom on,  
Open Mesh, channel 1"



**Off:** "Mesh intercom off"

## Mute/Unmute Mic

Press the Mesh Intercom button for 1 second to mute/unmute the microphone during Mesh Intercom communication.

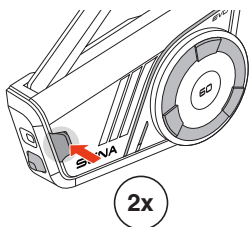


Mute: "Mic off"

Unmute: "Mic on"

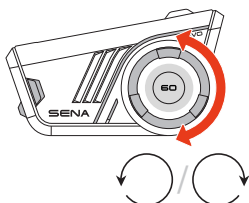
## Channel Selection

1. Enter the channel setting.



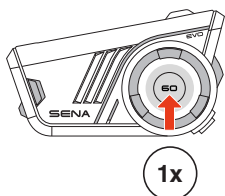
"Channel setting, 1"

2. Navigate between channels.



"#"

3. Confirm and save the channel.



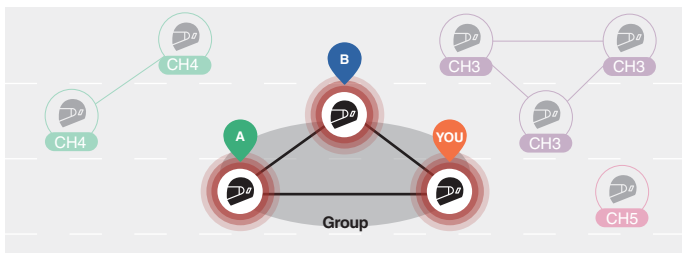
"Channel is set,  
channel #"

- The channel will be automatically saved if no buttons are pressed for 10 seconds on a specific channel.
- The channel will be saved even if the 60S EVO is turned off.

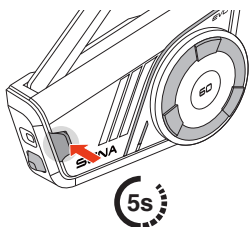
## Group Mesh

By using group mesh, a private conversation group can be created for up to 24 participants.

### Create a Group Mesh



1. Users (You, A, and B) enter the mesh grouping by pressing the Mesh Intercom button for 5 seconds while staying in the open mesh. They don't need to be on the same open mesh channel to create a group mesh together.

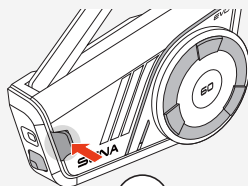


🔊 "Mesh grouping"

2. When mesh grouping is completed, it automatically switches from open mesh to group mesh.

🔊 "Group Mesh"

- If you want to cancel mesh grouping, tap the Mesh Intercom button.

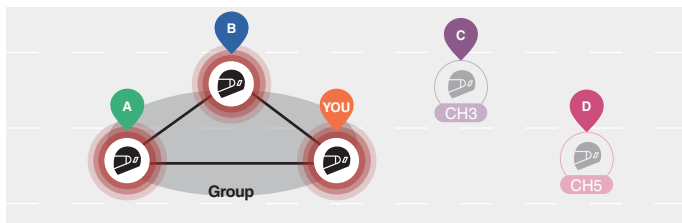


1x

- If the mesh grouping is not successfully completed within 30 seconds, users will hear a voice prompt saying, "Grouping failed."

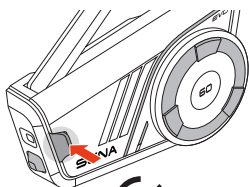
## Join an Existing Group Mesh

While you are in a group mesh, you can invite other users in open mesh to join the group.



You are already in group mesh with A and B, and the other users, C and D, are in open mesh.

1. You and the other users, C and D, enter mesh grouping by pressing the Mesh Intercom button for 5 seconds.



5s

"Mesh grouping"

2. When mesh grouping is completed, the other users, C and D, automatically join the group mesh while leaving the open mesh.

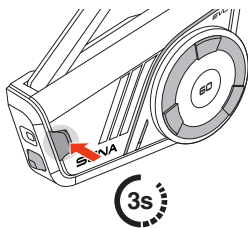
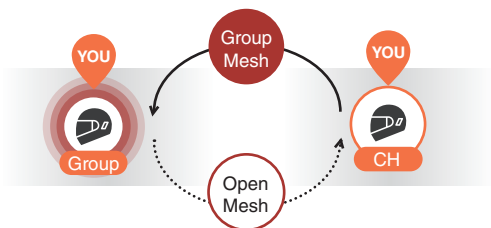
🔊 "Group Mesh"

New participants (C and D)

- If the mesh grouping is not successfully completed within 30 seconds, the current user (You) will hear a low tone double beep and the new users (C and D) will hear a voice prompt saying, "Grouping failed."

## Toggle Open/Group Mesh

You can toggle between open mesh and group mesh without resetting the mesh.



Open mesh

🔊 "Open Mesh"

Group mesh

🔊 "Group Mesh"

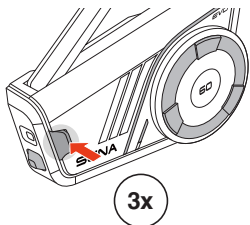
- If you have never participated in group mesh, you cannot toggle between open mesh and group mesh. You will hear a voice prompt saying, "No group available."

## Mesh Reach-Out Request

You (caller) can send a Mesh Reach-Out request to turn on Mesh Intercom to nearby\* friends who have it turned off.

1. If you want to send or receive a Mesh Reach-Out request, you need to enable it in the Sena Motorcycles app.
2. You can send a Mesh Reach-Out request using the Mesh Intercom button or the Sena Motorcycles app.

### Caller



**Caller:** "Mesh reach-out request"

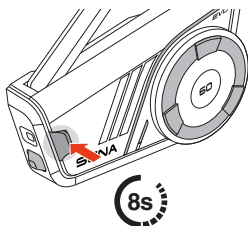
**Nearby Friends:** "Mesh intercom requested"

3. Friends who receive the Mesh Reach-Out request need to manually turn on their Mesh Intercom.

\* Up to 330 ft in open terrain

## Reset Mesh

If the 60S EVO resets the mesh while in open mesh or group mesh, it will automatically return to open mesh, channel 1.



"Reset Mesh"

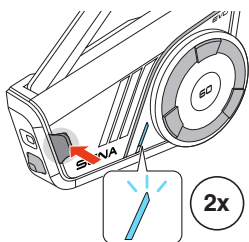
## 09 WAVE INTERCOM

Wave Intercom enables open communication using cellular data. For detailed information, please refer to the Wave Intercom User Guide on [sena.com](http://sena.com).

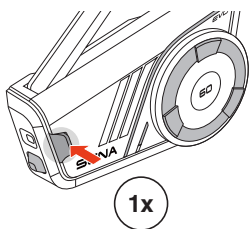
### Wave Intercom On/Off

Open the WAVE Intercom app, then double-tap the Mesh Intercom button to join Wave Intercom.

- You must open the app before starting Wave Intercom.



 **On:** "Wave Intercom on"



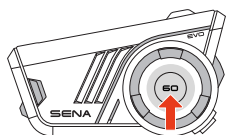
 **Off:** "Wave Intercom off"

When you start Wave Intercom, you will automatically connect with users in the Wave Zone. The Wave Zone covers a 1-mile radius in North America and a 1.6-km radius in Europe.

To end Wave Intercom, single-tap the Mesh Intercom button.

## Switch between Wave Intercom and Mesh Intercom

You can easily switch between Mesh Intercom and Wave Intercom with a single tap on the jog dial.



1x

**Wave to Mesh:** "Wave Intercom off. Mesh Intercom on."

**Mesh to Wave:** "Mesh Intercom off. Wave Intercom on."

- When the app is in use, the Bluetooth Intercom becomes temporarily disabled.

## 10 BLUETOOTH INTERCOM

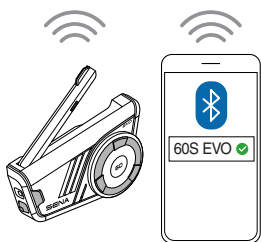
### Bluetooth Intercom Pairing

To have a Bluetooth intercom conversation, you need to pair with the other Sena headset users. The other user's headset will be added to the intercom pairing list of your 60S EVO, and vice versa.

You can add up to 3 headsets to the Bluetooth intercom pairing list, regardless of the headset model.

#### Using QR codes

1. Pair the mobile phone with the 60S EVO.
2. Each user opens the Sena Motorcycles app and taps "QR Pairing."



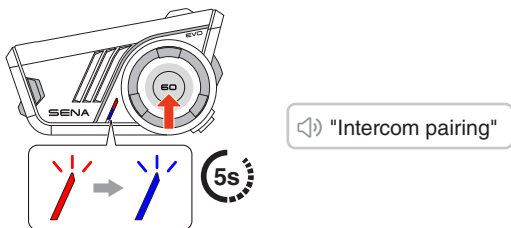
3. Scan the QR code displayed on the other user's screen.
4. Tap Save, and go to the "Bluetooth Intercom" menu to check the pairing list.
5. Tap the device name you want to pair with.
6. Repeat the process to add more headsets.

- QR Pairing is compatible with models featuring Bluetooth version 3.0 or later. For more information, visit [sena.com](https://www.sena.com).

## Using Buttons

QR pairing is highly recommended, but you can also pair with the other headsets using the jog dial.

1. Press and hold the jog dial for 5 seconds on both devices to enter intercom pairing mode together.

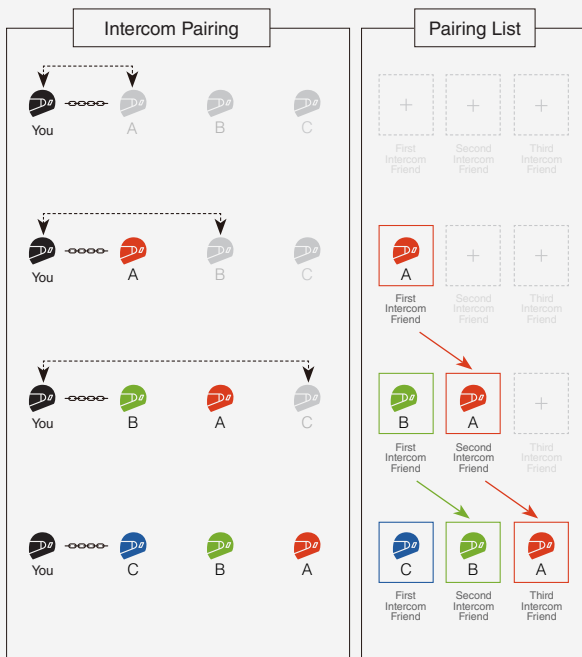


2. Wait until the pairing is complete. Once paired, a Bluetooth intercom connection is established.
3. To pair with another headset, please repeat the process above.

- It can take some time depending on the surrounding wireless signals, such as Wi-Fi.
- To cancel the intercom pairing, press the jog dial on the 60S EVO.

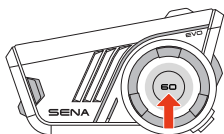
## Bluetooth Intercom Pairing List

- Paired headsets are added to the Bluetooth intercom pairing list of your 60S EVO. Tap "QR pairing" on the Sena Motorcycles app to check the list.
- The intercom pairing list operates on a last-come, first-served basis. If your 60S EVO is paired with multiple headsets for intercom conversations, the last paired headset is set as the first intercom friend.



## Two-Way Intercom

### Start/End Conversation with the Intercom Friend



1x



You



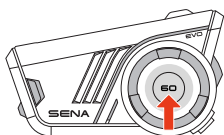
C  
First  
Intercom  
Friend



B  
Second  
Intercom  
Friend



A  
Third  
Intercom  
Friend



2x



You



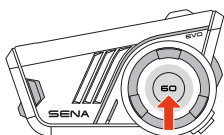
C  
First  
Intercom  
Friend



B  
Second  
Intercom  
Friend



A  
Third  
Intercom  
Friend



3x



You



C  
First  
Intercom  
Friend



B  
Second  
Intercom  
Friend



A  
Third  
Intercom  
Friend

### HD Intercom

Two-way Bluetooth intercom always operates in HD mode to enhance the intercom audio quality. The HD mode will be temporarily disabled when you enter a multi-way intercom.

## Multi-Way Intercom

Multi-way intercom enables group conversations with up to three other intercom friends simultaneously.

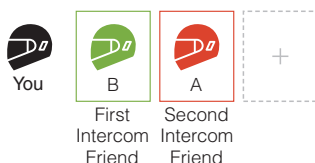
It works by linking multiple two-way intercom connections and sharing audio. For example, a three-way intercom connects two pairs of two-way intercoms, while a four-way intercom connects three.

Unlike previous Sena models, the 60S EVO maintains a phone connection during multi-way intercom.

### Start a Three-Way Intercom

One participant has to establish two independent two-way intercoms simultaneously.

1. Pair your headset with two other intercom friends to add them to your Bluetooth intercom pairing list.



2. Tap the jog dial once and start a conversation with B.



3. While maintaining the conversation with B, double-tap the jog dial to start another intercom conversation with A. Alternatively, A can start an intercom connection by calling you.



4. Now you, A and B can have a group conversation in a three-way intercom.



## Start a Four-Way Intercom

Each participant can establish up to two independent two-way intercom connections. Since you're already connected with A and B, either A or B must create a two-way intercom with C to link all connections together.



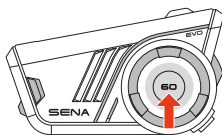
Now you, A, B, and C can have a group conversation in a four-way intercom.



## End Multi-Way Intercom

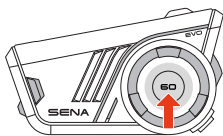
You can completely terminate the multi-way intercom or disconnect one of the intercom connections.

### Terminate All Intercom Connections



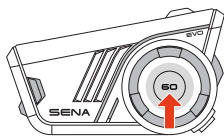
### Disconnect One of the Intercom Connections

[ Disconnect B,  
First Intercom Friend ]



1x

[ Disconnect A,  
Second Intercom Friend ]



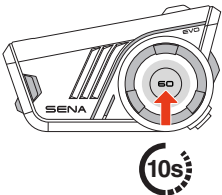
2x

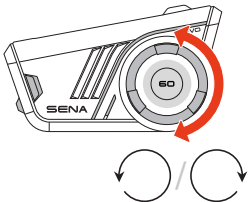
- In a four-way intercom, disconnecting the second intercom friend, A, will also disconnect you from the third participant, C. This is because C is connected to you through A.

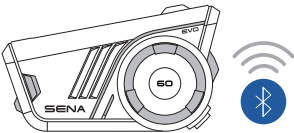
# 11 UNIVERSAL INTERCOM


Universal intercom allows you to have intercom conversations with headsets from other brands as long as they support Bluetooth Hands-Free Profile (HFP).

## Universal Intercom Pairing

- 

"Configuration menu"
- 

"Universal intercom pairing"
- 
- Put a non-Sena headset in phone pairing mode and wait until the 60S EVO automatically pairs with it.



Once paired, the universal intercom conversation is automatically established.

## Start/End Universal Intercom Conversation

Once paired, a non-Sena headset can join both two-way and multi-way intercom conversations. Unlike Sena headsets, only one non-Sena headset can be connected to the 60S EVO in a multi-way intercom.

Below are examples of the four-way Bluetooth intercoms with universal intercom included.

### Case 1. Three Sena headsets and one non-Sena headset.



### Case 2. Two Sena headsets and two non-Sena headsets.



- Not all non-Sena headsets support multi-way intercom. Refer to their user guides for compatibility.

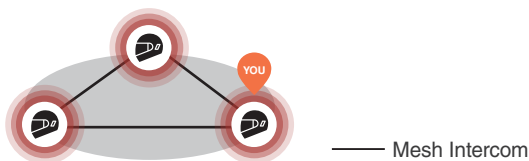
## 12 INTERCOM GATEWAY

The 60S EVO serves as a gateway to bridge Mesh Intercom with other intercom types, such as Bluetooth intercom or universal intercom. It supports two simultaneous connections: Mesh Intercom plus either Bluetooth intercom or universal intercom.

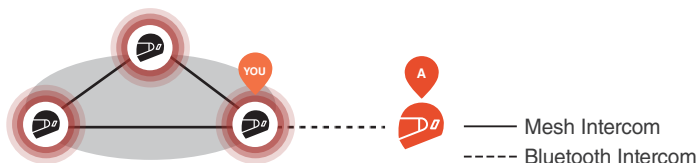
While in open or group Mesh Intercom, you can easily initiate a bridge to either Bluetooth intercom or universal intercom.

### Mesh Intercom with Bluetooth Intercom

1. Tap the Mesh Intercom button to turn on the Mesh Intercom. You can stay either in open mesh or group mesh.

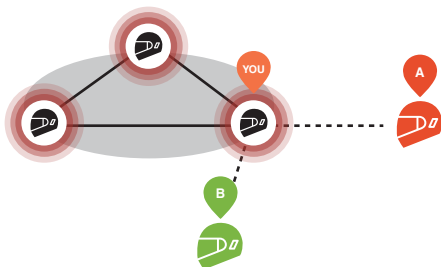


2. Start a Bluetooth intercom with your friend for a two-way intercom.

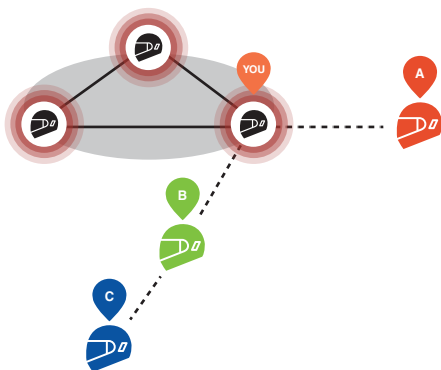


3. Add more Bluetooth intercom connections for a multi-way intercom.

### Mesh Intercom and Three-Way Intercom



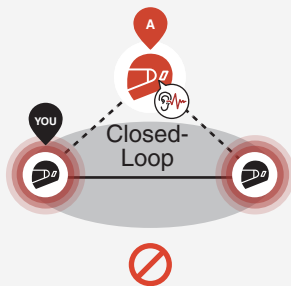
### Mesh Intercom and Four-Way Intercom



- The audio quality will be reduced in multi-way intercom while staying in Mesh Intercom.

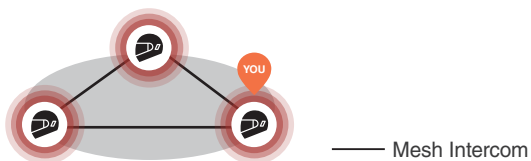
## A Closed-Loop Warning

- When the 60S EVO serves as a gateway, connecting two Mesh Intercom participants with one Bluetooth intercom participant will cause excessive noise for all participants.
- Please be aware not to create such a connection under any circumstances.

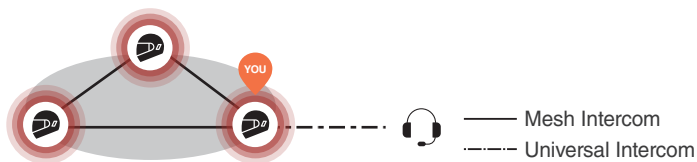


## Mesh Intercom with Universal Intercom

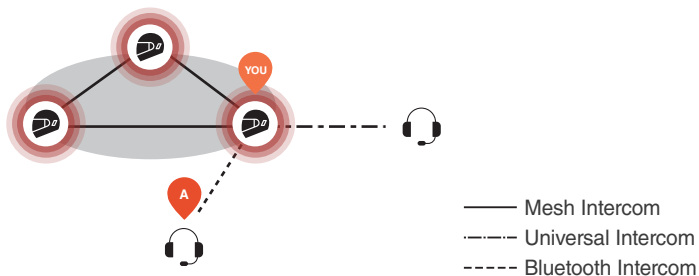
1. Tap the Mesh Intercom button to turn on the Mesh Intercom. You can stay either in open mesh or group mesh.



2. Start a universal intercom with a non-Sena headset.



3. Start a Bluetooth Intercom with your friend A. You can establish a multi-way intercom by adding more intercom connections.



Mesh Intercom and Three-Way Universal Intercom

- The audio quality will be reduced in multi-way intercom while staying in Mesh Intercom.

---

## 13 AUDIO MULTITASKING

Audio multitasking on the 60S EVO allows you to listen to music, GPS turn-by-turn instructions, and FM radio while having a Mesh Intercom or Bluetooth intercom.

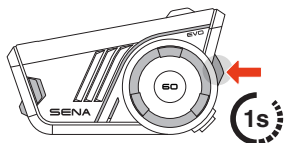
For more details, go to Device Settings on the Sena Motorcycles app to configure the settings.

### **Background Volume**

Background audio, such as music playback, will automatically lower in volume during an active intercom conversation. You can adjust the volume reduction percentage in the app under 'Background Volume'.

## 14 FM RADIO

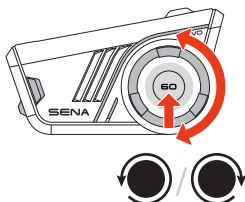
### FM Radio On/Off



**On:** "FM Radio On"

**Off:** "FM Radio Off"

### Seek Stations

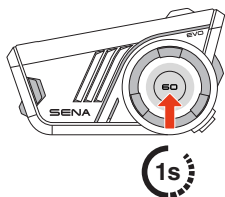


### Save to Preset

You can use the Sena Motorcycles app to save the station to your preset stations.

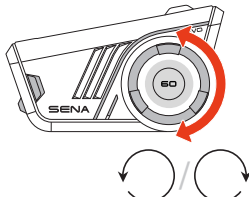
### Select Station from Preset

1. Enter the station selection mode.



"Station Selection Mode"

2. Navigate forward or backward through preset stations.



"Preset (#)"

- If you do not press any button for approximately 10 seconds, or if you press and hold the jog dial for 1 second while in the station selection mode, the headset will exit the station selection mode.

## 15 VOICE COMMAND

The 60S EVO offers multi-language voice commands in eight different languages, which can be easily set through the Sena Motorcycles app. A complete list of available voice commands is also provided in the Sena Motorcycles app.

To activate voice commands, simply say, "Hey Sena."

 "Hey Sena"

### **I Voice Command List**

- "Answer"
- "Ignore"
- "Hey Sena, Check Battery"
- "Hey Sena, Volume Up"
- "Hey Sena, Volume Down"
- "Hey Sena, Phone Pairing"
- "Hey Sena, Redial Number"
- "Hey Sena, End Call"
- "Hey Sena, Play Music"
- "Hey Sena, Stop Music"
- "Hey Sena, Previous Track"
- "Hey Sena, Next Track"
- "Hey Sena, FM Radio On"
- "Hey Sena, FM Radio Off"
- "Hey Sena, End Intercom"
- "Hey Sena, Intercom One"
- "Hey Sena, Intercom Two"
- "Hey Sena, Intercom Three"
- "Hey Sena, Mesh Intercom On"
- "Hey Sena, Mesh Intercom Off"
- "Hey Sena, Wave Intercom On"
- "Hey Sena, Wave Intercom Off"

## 16 FIRMWARE UPDATE

### Over-the-Air (OTA) Update

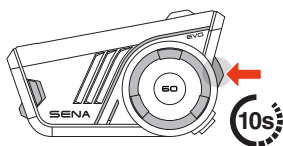
You can update the firmware via Over-the-Air (OTA) directly from the settings in the Sena Motorcycles app.

## 17 TROUBLESHOOTING

### Factory Reset

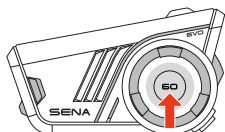
To restore the 60S EVO to its factory default settings, simply use the factory reset feature.

1.



"Factory reset"

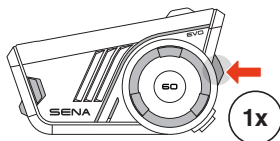
2.



1x

"Headset reset, good-bye"

OR



1x

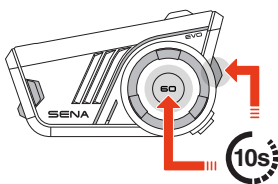
"Cancel"

## Fault Reset

If the 60S EVO is on but not responding, you can perform a fault reset to restore normal functionality.

Ensure the USB-C charging cable is disconnected, then press the jog dial and phone button simultaneously for 10 seconds.

All settings will remain unchanged.





Copyright 2026 Sena Technologies, Inc.  
All rights reserved.

© 1998–2026 Sena Technologies, Inc. All rights reserved.

Sena Technologies, Inc. reserves the right to make any changes and improvements to its product without providing prior notice.

Sena™ is a trademark of Sena Technologies, Inc. or its subsidiaries in the USA and other countries.

The Bluetooth® word mark and logos are owned by the Bluetooth SIG, Inc. and any use of such marks by Sena is under license.

Sena Technologies, Inc.  
9155 Sterling Rd. STE 100, Irving, TX 75063