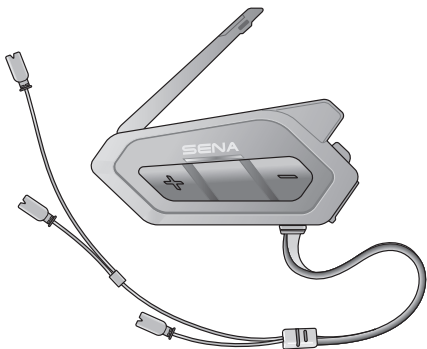


SENA



SOR

LOW PROFILE MOTORCYCLE BLUETOOTH®
COMMUNICATION SYSTEM
WITH MESH INTERCOM™

———— SOUND BY ————
harman/kardon®

QUICK START GUIDE

ENGLISH / 2.1.0

RIDE CONNECTED

Designed for those who want a sleeker device, the 50R Mesh Intercom™ headset continues Sena's affinity for advancing adventure and keeping people connected on the road.



Bluetooth® 5.0



Multi-Way Intercom



Mesh Intercom™ up to 2 km (1.2 mi)*



Intercom up to 2 km (1.2 mi)*



Audio Multitasking™



- Multi-Language Voice Command
- Support Siri and Google Assistant



Fast Charging

* in open terrain

GETTING STARTED

Icon Legend



Tap button the specified number of times



Press and Hold button for the specified amount of time



"Hello"

Audible prompt

Follow us on Facebook, YouTube, Twitter and Instagram to check the latest information and helpful tips.

SENA

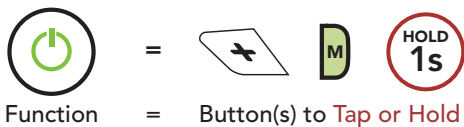
SENA Technologies, Inc.
sena.com



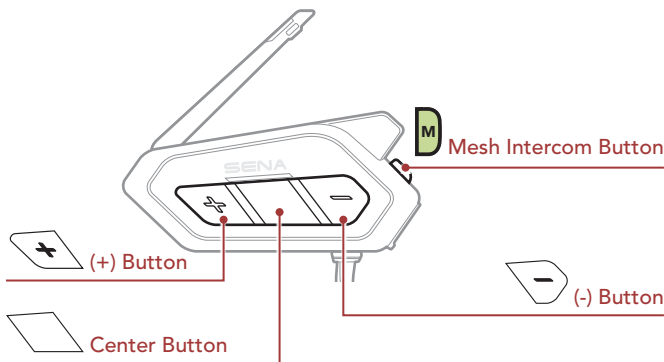
GETTING STARTED

How to Use This Guide

The legend and callouts are here to help you read the illustrations. New technology can be confusing, but we've created a simple way to perform actions using illustrations.



Buttons



QUICK START GUIDE

Product Details

Mesh Intercom Antenna

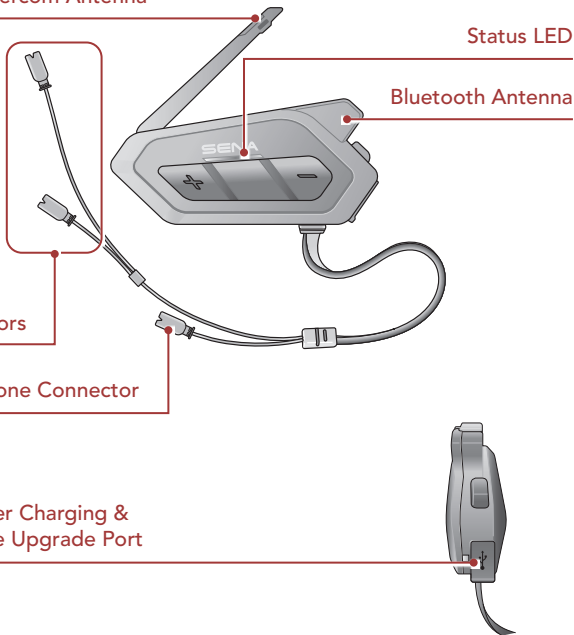
Status LED

Bluetooth Antenna

Speaker
Connectors

Microphone Connector

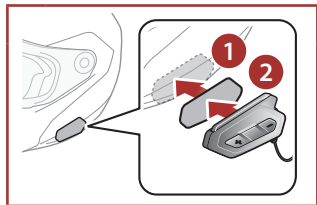
DC Power Charging &
Firmware Upgrade Port



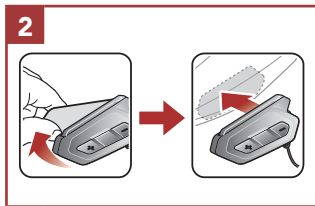
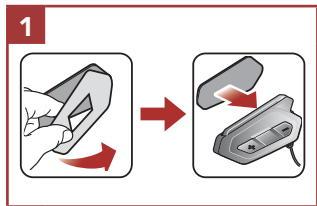
QUICK START GUIDE

Installation

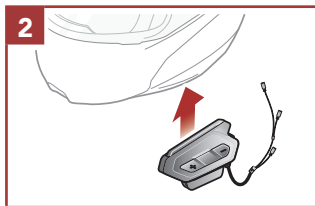
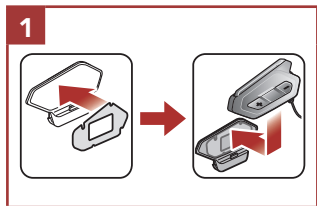
Using the Hook and Loop Fasteners for Main Unit



Using the Double Sided Adhesive Tapes for Main Unit

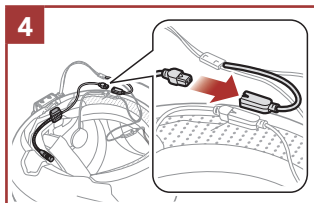
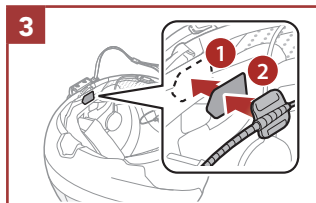
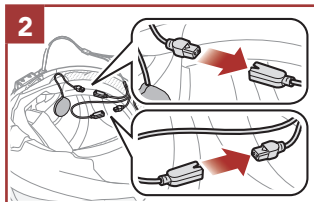
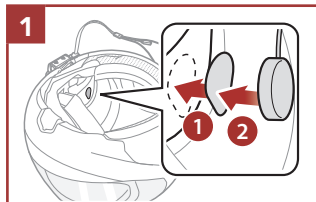


Using the Clamp for Main Unit



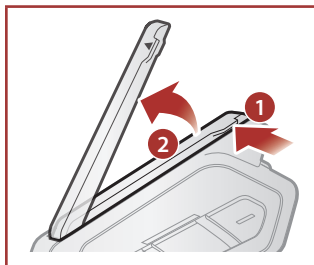
QUICK START GUIDE

Installing the Speakers and the Microphone



Mesh Intercom Antenna

Pull the Mesh Intercom Antenna inwards slightly to unfold it.



QUICK START GUIDE

Downloadable Sena Software

Download the **Sena Motorcycles App** at **Google Play Store** or **App Store**.



Sena Motorcycles

- Device configuration setting

Download the following items at **sena.com**.



Sena Device Manager

- Firmware upgrade
- Device configuration setting



Quick Start Guide, User's Guide

NOTICE

- This **Quick Start Guide (Version 2.0.0 or higher)** explains how to operate the 50R with **firmware version 2.0.0 or higher**.
- For operating the 50R with **a firmware version lower than 2.0.0**, refer to the **50R Quick Start Guide** that is available when you connect the 50R to the **Sena Motorcycles App**.

QUICK START GUIDE

Basic Operations

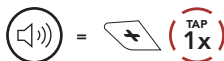
Powering On



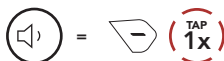
Powering Off



Volume Up



Volume Down



Checking the Battery Level




Instructions are for when powering the headset on.

Visual Method






QUICK START GUIDE

Phone Pairing

1.  =  



"Configuration menu"

2.  =  

Blinking  



"Phone pairing"

3. Select **50R** in the list of Bluetooth devices detected.

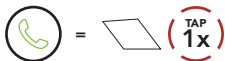


- The headset will enter the **Phone Pairing mode** automatically when you **initially turn on** the headset.
- For more information on phone pairing, refer to the User's Guide.

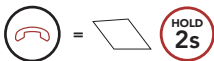
QUICK START GUIDE

Mobile Phone

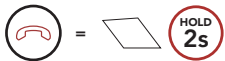
Answer a Call



End a Call



Reject a call



Siri and Google Assistant

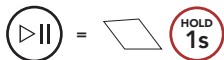
Activate the Siri or Google Assistant Installed on Your Smartphone



QUICK START GUIDE

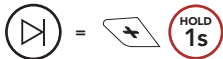
Music Controls

Play/Pause

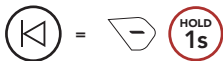


"[Beep, Beep]"

Track forward



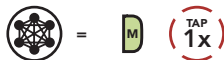
Track backward



Mesh Intercom™

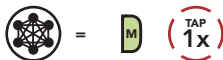
When **Mesh Intercom** is enabled, the **50R** will automatically connect to nearby **50R** users and allow them to talk to each other by pressing the **Mesh Intercom Button**.

Mesh Intercom On



"Mesh intercom on"

Mesh Intercom Off



"Mesh intercom off"



QUICK START GUIDE

Open Mesh™

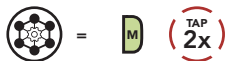
When **Mesh Intercom** is enabled, the headset will be in **Open Mesh (default: channel 1)** initially. Users can freely communicate with each other in the same **Open Mesh** channel.

Channel Setting (Default: channel 1)

If the **Open Mesh** communication experiences interference because other groups are also using **channel 1 (default)**, change the channel. You can select from channels 1 to 9.

QUICK START GUIDE

Enter into the Channel Setting

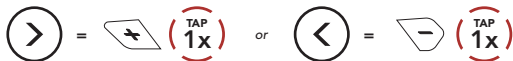


"Channel setting, 1"



Navigate between Channels

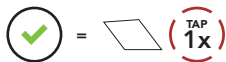
(1 → 2 → ... → 8 → 9 → Exit → 1 → ...)



"##"



Save the Channel



"Channel is set, channel #"

Note: To exit the **Channel Setting**, tap the **(+) Button** or **(-) Button** until you hear a voice prompt, **"Exit"**, and tap the **Center Button**.

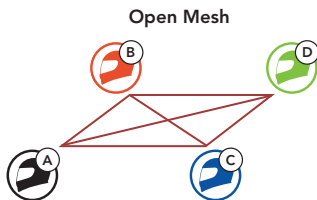
QUICK START GUIDE

Group Mesh™

Group Mesh is a closed group intercom function that allows users to join, leave, or rejoin a group intercom conversation without pairing each headset. Up to 24 users can all be connected in each private group.

Creating a Group Mesh

Creating a **Group Mesh** requires **two or more Open Mesh** users.



1. Enter into **Mesh Grouping** to create a **Group Mesh**.



YOU

and

=



FRIEND



"Mesh grouping"

QUICK START GUIDE

- The headsets complete **Mesh Grouping** and automatically switch from **Open Mesh** to **Group Mesh**.

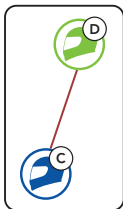


"Group Mesh"

Open Mesh



Group Mesh



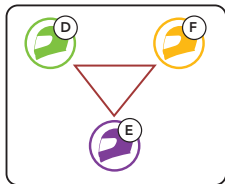
Joining an Existing Group Mesh

One of the members in an **Existing Group Mesh** can allow new members in **Open Mesh** to join the **Existing Group Mesh**.

New Members



Existing Group Mesh and Current Members



QUICK START GUIDE

1. **One of the current members** and a **new member** enter into **Mesh Grouping** to join the **Existing Group Mesh**.



YOU
(NEW
MEMBER)

and

=



CURRENT
MEMBER
IN GROUP
MESH

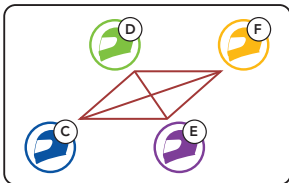


"Mesh grouping"

2. The headsets complete **Mesh Grouping**. The new members will hear a voice prompt as their headsets automatically switch from **Open Mesh** to **Group Mesh**.



"Group Mesh"

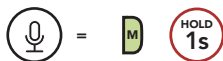


QUICK START GUIDE

Enable/Disable Mic (Default: Enable)

Users can enable/disable the microphone when communicating in a **Mesh Intercom**.

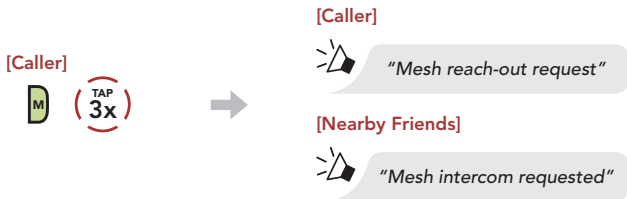
Enable/Disable the Microphone



Mesh Reach-Out Request

You (caller) can send a request message to turn on the Mesh Intercom to nearby friends who have it turned off.

1. If you want to send or receive a request message, you need to enable **Mesh Reach-Out** on the **Sena Motorcycles App**.
2. While your headset's Mesh Intercom is on, you (caller) send a request message using the **headset's Button** or the **Sena Motorcycles App**.

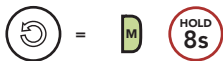


3. Friends who receive the request message need to manually turn on their Mesh Intercom using the **headset's Button** or the **Sena Motorcycles App**.

QUICK START GUIDE

Reset Mesh

If a headset in an **Open Mesh** or **Group Mesh** resets the **Mesh**, it will automatically return to **Open Mesh (default: channel 1)**.

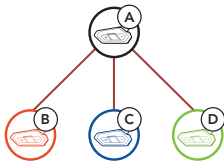


Bluetooth Intercom

Up to three other people can be paired with the headset for **Bluetooth intercom** conversations.

Intercom Pairing

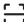
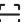

There are two ways to pair the headset.

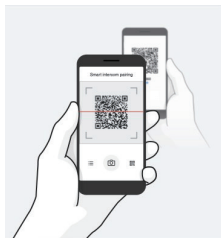



QUICK START GUIDE

Using the Smart Intercom Pairing (SIP)

SIP allows you to quickly pair with your friends for intercom communication by scanning the QR code on the **Sena Motorcycles App** without remembering the button operation.

1. Pair the mobile phone with the headset.
2. Open the **Sena Motorcycles App** and tap  (**Smart Intercom Pairing Menu**).
3. Scan the **QR code** displayed on your friend (**B**)'s mobile phone.
 - Your friend (**B**) can display the QR code on the mobile phone by tapping  > **QR code** () on the **Sena Motorcycles App**.



4. Tap **Save** and check that your friend (**B**) is paired with **you (A)** correctly.
5. Tap **Scan** () and repeat steps 3-4 to pair with **Intercom Friends (C)** and (**D**).

Note: The **Smart Intercom Pairing (SIP)** is not compatible with Sena products that use **Bluetooth 3.0** or **below**.

QUICK START GUIDE

Using the Button



and

=



The **two headset (A and B)** will be automatically paired.



Blinking 



"Intercom pairing"

Turns blue 



Note: Repeat the step above to pair with Intercom Friends C & D.

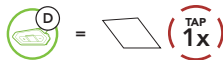
QUICK START GUIDE

Two-Way Intercom

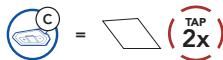
Last-Come, First-Served



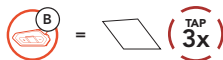
Start/End with Intercom Friend 1



Start/End with Intercom Friend 2



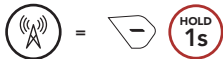
Start/End with Intercom Friend 3



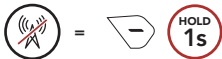
QUICK START GUIDE

FM Radio

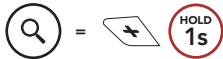
FM Radio On



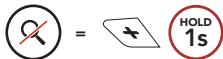
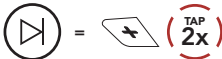
FM Radio Off



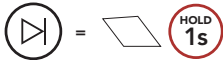
Scan Stations



Seek Stations



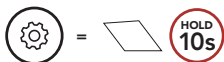
Navigating Preset Stations



QUICK START GUIDE

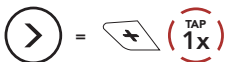
Configuration Menu

Accessing the Headset Configuration Menu



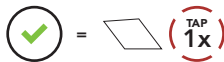
"Configuration menu"

Navigating Between Menu Options



"[Menu prompt]"

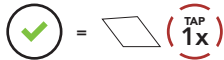
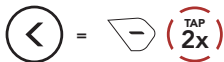
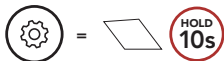
Execute Menu Options



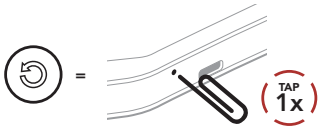
"[Menu prompt]"

Troubleshooting

Factory Reset











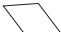

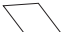

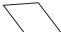





Fault Reset




















Note: Fault Reset will not restore the headset to factory default settings.

QUICK REFERENCE

TYPE	OPERATION	BUTTON COMMANDS
 Basic Operations	Power on/ Power off	     
	Volume up/Volume down	 or  
 Mobile Phone	Answer phone call	 
	End phone call	 
	Reject phone call	 
 Siri and Google Assistant	Activate the Siri or Google Assistant	 

QUICK REFERENCE

TYPE	OPERATION	BUTTON COMMANDS
 Music	Play/Pause music	 
	Track forward	 
	Track backward	 
 FM Radio	FM radio on/off	 
	Select preset	 
	Seek forward/ backward	 or  
	Scan up FM band/ stop scanning	 

QUICK REFERENCE

TYPE	OPERATION	BUTTON COMMANDS
 Mesh Intercom™	Mesh Intercom on/off	 
	Channel setting	 
	Mesh Grouping	 
	Enable/Disable Mic	 
	Mesh Reach-Out Request	 
	Reset Mesh	 
 Intercom	Intercom pairing	 
	Start/End intercom	 